

31 Orchard Terrace
Lemington
Newcastle upon Tyne
NE15 8AA

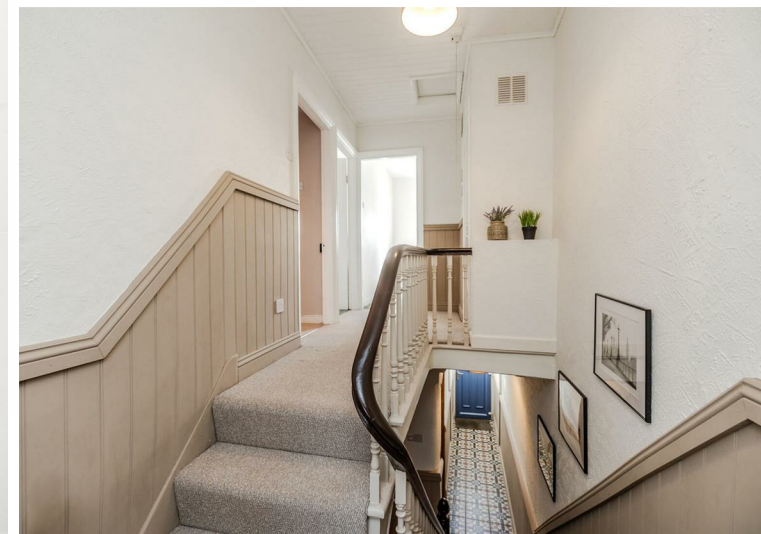
Asking Price
£120,000



31 Orchard Terrace
Lemington
Newcastle upon Tyne
NE15 8AA

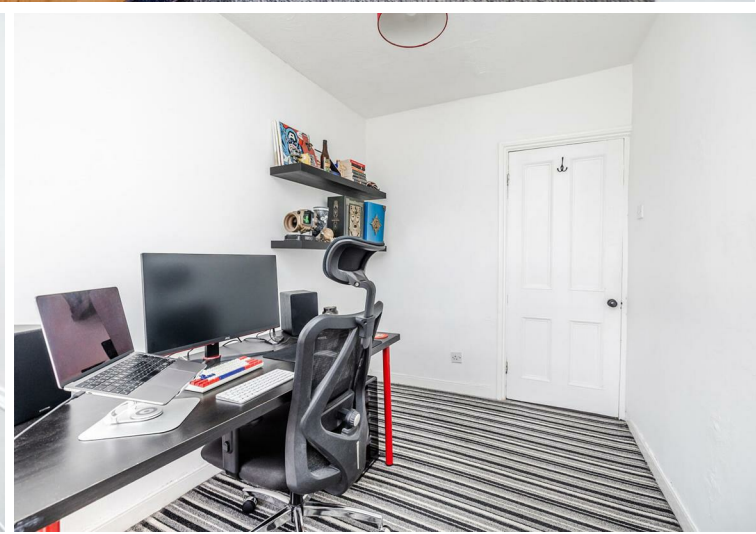
- 3 Bedroom End Terrace House
- Underfloor Heating to the Ground Floor
- Open Plan Dining Kitchen
- Nearby Shops & Bus Routes
- Sealed Unit Double Glazed Windows
- Immaculately Presented
- Recently Refitted Modern Shower Room
- Separate Utility Area
- Gas Central Heating
- EPC D | Council Tax Band A

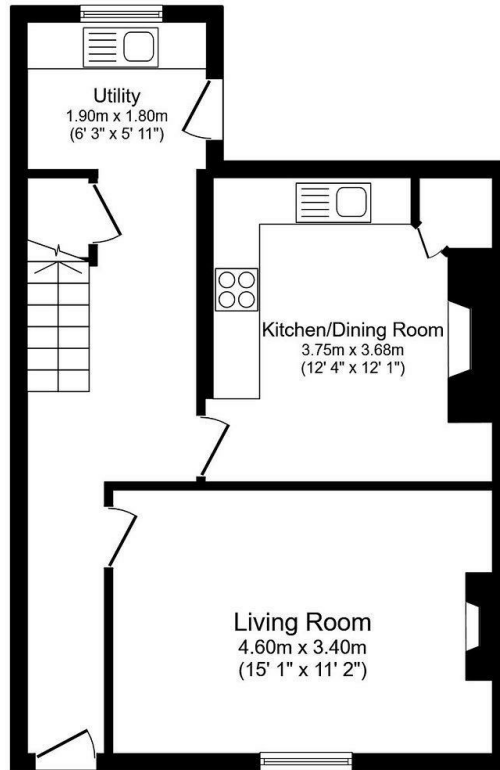






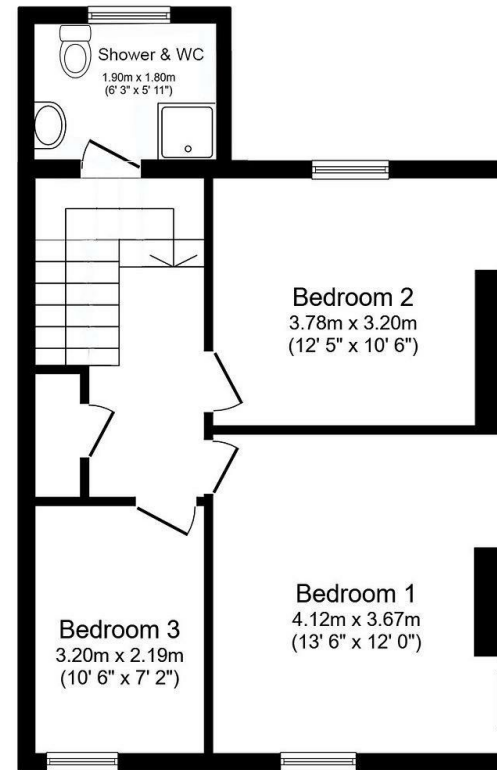
31 Orchard Terrace, Lemington, Newcastle upon Tyne, NE15 8AA





Ground Floor

Floor area 49.1 sq.m. (529 sq.ft.)



First Floor

Floor area 44.7 sq.m. (481 sq.ft.)

Total floor area: 93.9 sq.m. (1,010 sq.ft.)

This floor plan is for illustrative purposes only. It is not drawn to scale. Any measurements, floor areas (including any total floor area), openings and orientations are approximate. No details are guaranteed, they cannot be relied upon for any purpose and do not form any part of any agreement. No liability is taken for any error, omission or misstatement. A party must rely upon its own inspection(s).



EPC Rating: D
Council Tax Band: A

Whilst every care has been taken to prepare these particulars, they are for guidance purposes only. All measurements are approximate and whilst every care has been taken to ensure their accuracy, they should not be relied upon and potential buyers/tenants are advised to recheck the measurements. The agent has not tested any equipment, services, fixtures or fittings and makes no representation regarding their condition.

CONTACT

128 The Roman Way, West Denton,
Newcastle upon Tyne, NE5 5AD

E:
westdenton@goodfellowsestateagents.com
T: 0191 2677500

